

Boulder County Senior Housing Guide 2011-2012

Resources for Older Adults, Adults with Disabilities,
Caregivers, and Professionals



CONNECT!

Serving older adults and adults with disabilities

Adult Resources for Care and Help
ARCH



Serving older adults and adults with disabilities

- Identifying Needs
- Exploring Options
- Supporting Strengths
- Finding Solutions

The CONNECT! Information & Assistance Call Center: 303-441-1617 English & Spanish

CONNECT! is committed to providing a continuum of Information & Assistance services in Boulder County that address basic needs, promote individual and community involvement, optimize health and wellness, and maximize independence and caregiving. If you would like to speak to a professional in your community, you can access any one of the following agencies:

Boulder County Aging Services*

Allenspark Area: 303-747-2592
Lyons Area: 303-823-9016
Nederland Area: 303-258-3068
Niwot Area: 303-652-3850

Center for People with Disabilities*

Marni Tharler, Information & Assistance Specialist
info@cpwd.org
Phone: 303-442-8862 ext. 102

City of Boulder Senior Services*

Senior Resource Specialists: 303-441-4388
Bilingual Resource Assistant: 303-441-3918

City of Lafayette Senior Services*

Lorna Beard, Resource Specialist
Email: lornab@cityoflafayette.com
Phone: 303-665-9052 ext. 3

City of Longmont Senior Services*

Veronica Garcia, Resource Specialist—Bilingual
Email: veronica.garcia@ci.longmont.co.us
Phone: 303-651-8716

City of Louisville Senior Services

Diane Evans, Community Resource Coordinator
Email: dianee@louisvilleco.gov
Phone: 303-335-4919

Imagine!*

Sandy Crowell, Family Support Program Manager
Email: scrowell@imaginecolorado.org
Phone: 720-274-2248

* CONNECT! Partner

Disclaimer

This resource directory is provided as a public courtesy and does not recommend or endorse any specific provider or service included in the directory. The Service Directory contains information related to health or medicine, and is provided for informational purposes only and not intended to be a substitute for professional advice, diagnosis or treatment.

PRACTICE SUSTAINABILITY

These resources and more can be found at www.BoulderCountyHelp.org

Contents

Housing Options.....	2
Other Resources Related to Senior Housing	4
After Hospitalization - What Are My Options If I Can't Return Home?	6
How to Choose an Assisted Living Facility	10
Boulder County Long-Term Care Ombudsman Program.....	12
How to Pay for Long-Term Care.....	13
Glossary of Terms.....	14
Boulder Facilities.....	16
Boulder Locator Map.....	17
Longmont Housing Facilities	20
Longmont Locator Map	21
Erie, Lafayette, and Louisville Housing Facilities	24
Erie, Lafayette, and Louisville Locator Maps.....	25
Lyons, Nederland, and Niwot Housing Facilities.....	26
Lyons, Nederland, and Niwot Locator Maps.....	27
Other Private Housing Options	30
2011 Housing Prices	34
Boulder County Resource Specialists.....	46

Housing Options

INDEPENDENT LIVING

Residents in an independent living situation live in their own homes (defined as an apartment, condo, townhome, duplex, mobile home or single-family house) with little support from the housing facility, although services provided by the facility can vary. Types of independent living apartments include privately-owned, public housing, and different types of subsidized housing.

PRIVATE RENTAL HOUSING

These are privately owned senior residences that are available for rent. Costs are determined by the owner and vary according to the services provided, application fees, entrance fees, and security deposits.

SUBSIDIZED HOUSING

There are two types of programs where the rental cost is federally subsidized by the Department of Housing and Urban Development (HUD) under financial eligibility guidelines. Both programs are administered by the local Housing Authority.

- Units in apartment buildings that are lower than market rent because they are privately subsidized or subsidized by either a city or county;
- Rental assistance through a housing voucher (Section 8 Housing Choice Voucher) is a program that assists very low-income families, the elderly, and people with disabilities in finding

decent and safe housing. A recipient of a Housing Voucher is responsible for finding a suitable housing unit (apartment, condo, townhome, duplex, mobile home or single-family house) where the owner agrees to rent under the program.

ASSISTED LIVING

Assisted living residences are also known as personal care homes, personal care boarding homes, residential care homes, or alternative care facilities.

These homes or facilities are designed for older adults or adults with disabilities who can no longer live at home due to safety or care concerns, but are not yet in need of skilled nursing care. Assisted living residences offer 24-hour oversight, meals, snacks, housekeeping, medication supervision, and assistance with bathing, dressing, and grooming. Residents have private or semi-private rooms with shared living and eating areas. Sometimes additional services and/or amenities can be purchased for additional charges. The facility will conduct a comprehensive evaluation (also known as a functional assessment) to determine the physical and cognitive abilities of the applicant prior to acceptance for admission.

The Colorado Department of Public Health and Environment requires that any assisted living facility caring for three or more clients be licensed according to State standards. For more information on licensing visit their website at www.cdphpe.state.co.us or call 303-692-2800.

SKILLED NURSING FACILITIES

Skilled Nursing Facilities are health care facilities which provide short-term rehabilitation or long-term care. These facilities are licensed by the Colorado Department of Public Health and Environment for intermediate and skilled care. All facilities provide personal and medical care, as well as meals, housekeeping, and 24-hour supervision. Most rooms are shared, but some facilities offer private rooms, and some facilities have separate Alzheimer's units. A written referral from a physician is required.

LIFECARE OR CONTINUING CARE RETIREMENT COMMUNITIES (CCRCs)

Continuing Care Retirement Communities (CCRCs) offer residents a “guaranteed” continuum of care, from independent living to assisted living and nursing care if required, within one building or on a campus of buildings. Residents should expect to sign a contract with an initial fee for “lifetime” long-term care services.

PRIVATE PURCHASE HOUSING

Private purchase housing resources refer to the purchase of a home (condo, townhome, duplex, mobile home, single-family home).

MOBILE HOME PARK

Some mobile home parks are designated for older adults 55+. In some instances a prospective resident may put their own mobile home on the site. In other cases, a prospective resident may have to purchase a mobile home in the community.

Other Resources Related to Senior Housing

Chore and Fix-it Programs

Chore and Fix-it programs provide home repairs for older adults or adults with disabilities. Examples of repairs can include grab bar installation, leaky faucet repair, weatherization, and other household jobs such as lamp and switch repair, hanging mirrors and pictures, and furniture repair.

Housing Authorities

Housing Authorities can be city, county, or state housing offices that provide information about eligibility for and vacancies in the subsidized housing properties that are under their jurisdiction. Housing Authorities accept Section 8 applications, provide Section 8 Vouchers, make approved Section 8 rental payments and administer public housing communities.

- **Boulder County Department of Housing and Human Services: 303-441-3929**
- **Boulder Housing Partners: 720-564-4610**
- **Longmont Housing Authority: 303-651-8581**

Housing Counseling

Housing Counseling programs provide comprehensive assistance for people who want to rent or purchase housing as well as current homeowners dealing with foreclosure issues.

Moving Assistance

Moving Assistance programs provide help for people who need assistance with relocation. Senior Move Managers specialize in helping older adults relocate and “right-size”.

Property Tax Information

Property Tax Information programs provide help with specific tax-related issues.

- **Boulder County Assessor: Senior Property Tax Exemption (This program is currently not active.)**
- **Boulder County Treasurer: Senior Property Tax Deferral Program: 303-441-3520**
- **Boulder County: Property Tax Work-off Program 303-441-4923**

For more information about these resources call the CONNECT! Information & Assistance Line at 303-441-1617 or visit the web at www.BoulderCountyHelp.org

Emergency Rent Payment Assistance

Rent Payment Assistance programs help make rental payments for people who are at risk of eviction without assistance. Some programs have eligibility requirements.

Section 8 Housing Choice Vouchers

The Housing Choice Voucher program is the federal government's major program for assisting very low-income families, the elderly, and the disabled to afford housing in the private market. Housing Choice Vouchers are administered locally by local housing authorities. Participants find their own housing (including single-family homes, townhouses, apartments etc.) that meets the requirements of the program. The housing choice voucher program does not require participants to only rent from subsidized housing projects. The owner agrees to rent under the rules and conditions for the program. Rental units must meet minimum standards of health and safety, as determined by the local housing authority.

Subsidized Home Improvement & Modification

There are programs that pay for or provide assistance in the form of consultation, labor and/or supplies for people who want to build an accessible home or need to upgrade their homes to make them safe (e.g. grab bars), accessible (e.g. ramps), and energy efficient.

Emergency Utility Assistance

Utility Assistance programs provide financial assistance for people who are at risk of having their utilities shut off. Some programs have eligibility requirements.

Weatherization Programs

Weatherization programs provide assistance in the form of labor and supplies to help people improve the energy efficiency of their homes and protect them from the elements.

Yard Work

Yard Work programs provide maintenance services for people who need assistance in the upkeep of their yards. These programs can include snow removal.

After Hospitalization What Are My Options If I Can't Return Home?

Darlene Savage, R.N.,
Director Care Coordination
Longmont United Hospital

In each of our lives, an acute hospitalization can occur as a planned or an unplanned event. In either case, the optimal outcome most often preferred, is to regain our prior level of functioning and return home. For a planned surgical procedure the information you receive from your doctor prior to your surgery should best inform you of the routine and expected course of recovery. Because your physician knows your health history and you know your situation and abilities, this is the time to ask questions and honestly plan and assess how easy or difficult it will be for you to return to your own environment. You might want to think about if there are stairs in your home that you will have to navigate. You should also consider that if you live alone, is there someone you can rely on to provide the support and assistance that you might require? If you normally are the caregiver for your partner, have plans been put into place to ensure that their care is covered and needs are met when you cannot provide for them? A thorough assessment and plan creates a lower level of stress, which positively supports your ability to heal.

However, even with the best of preparation and planning, events may occur which alter the option of returning home immediately upon discharge. In some cases, home health care RNs and therapists may be ordered by your doctor for skilled needs in the home if you are homebound but able to perform some independent functioning. Their care is intermittent as scheduled. However, if you cannot safely function alone for extended

periods of time, you may require additional assistance for skilled services at a level that cannot be provided in your home. A hospital care coordinator or discharge planner can help you understand the services and options available to you. This is always a coordinated effort to develop the most appropriate plan of care to meet your needs after hospitalization.

The level of care status for your acute hospital stay may be Outpatient Observation or Inpatient, depending on the severity of your illness and the intensity of services you receive. Your acute stay in the hospital will end when you no longer require acute care which can only be received in an acute hospital setting. When you pass a safe discharge screen and are stable to receive the next level of care, you will be discharged to either return home with or without services or receive skilled care at the qualified facility of your choice.

If you do require inpatient skilled rehabilitation care, the most commonly utilized resources and facilities are:

Inpatient Rehabilitation

Inpatient rehabilitation provides 24-hour inpatient skilled therapeutic care for patients requiring intensive physical, occupational or speech therapy in order to restore the patient to their former range of functioning. Typically, the patient must be able to tolerate three hours per day total of physical therapy (PT), occupational therapy (OT), or speech therapies. The environment is well suited, but not limited to, therapies for stroke and neurological injury patients and does not require a qualifying three day stay for Medicare patients, but must be authorized

by Medicare Managed Care and commercial insurance RN reviewers and be allowed in your benefit plan.

Skilled Nursing Facility (SNF)

A skilled nursing facility provides 24 hour skilled care for acute patients. Patients are referred when skilled needs for PT, OT, speech or nursing care are required under 24/7 supervision. Intravenous (IV) medications can be administered there. A plan is set in place to help improve your condition within a predetermined time period with reassessment of your skilled needs and further goal setting as you progress. SNFs are certified and licensed to make sure Federal and State health and safety guidelines and requirements are met. Most SNF's provide rooms and services for both short term rehabilitation patients and residents who are receiving long or short term non-skilled custodial care. Some hospitals also have SNF beds for short term skilled care on site. Most SNFs also offer Hospice and respite care services.

Just as it is important to know and understand the skilled care services each facility offers, it's equally as important to know what qualifies you - or not, for skilled care; to separate fact from fiction and help prepare you to make the most informed choice possible. As in most areas of life, healthcare being no different, a key factor is the payor supporting your choices. Medicare, Managed Medicare Plans, Medicaid and other commercial insurance coverage will vary in respect to facilities which are in network for allowable skilled care. Each payor may also have differing regulations for admission criteria and monitoring your length of stay. Of course, private pay is accepted in all facilities. For

more information about choices in your community contact the Resource Specialist or Aging Resource Consultant in your area. For more information about Medicare, etc. contact the local Medicare Counselor.

The Right to Choose

Taking the time to become familiar with the facilities in your area, touring and really acquainting yourself with the services and environments that suit your preferences, is proactive time well spent. Planning ahead in regard to your financial resources and establishing a Medical Power of Attorney to speak for you, in the event that you cannot, assure that your choices and decisions are respected. In the event that a more catastrophic illness or unexpected accident would cause a lengthy hospitalization and preventing any return to home, the discussions and family input into a plan you participated in for the "what if's..." is a wise important step taken ahead of time. Even with the best of preparation and planning, we can expect that life may indeed still throw us a curve. We can only at best plan, operate on purpose and still not always control outcome.

Darlene Savage, R.N. has 23 years of experience in healthcare. She works in an acute care hospital, working with the nurse care coordinators and professional social workers to optimally support the patient's transition and journey beyond hospitalization.

How to Choose an Assisted Living Facility

PROVIDER AGREEMENT/ POLICIES:

- Do the admission criteria match my needs?
- Have I reviewed the terms of the financial/provider agreement?
- Have I considered future fee increases?
- Is the unused portion of the rent refunded upon transfer/discharge?
- Do I have a choice in the selection of medical/health care providers if additional services are needed?
- Are the specific services offered clearly and identified in the agreement?
- Have I reviewed the house rules?
- Have I reviewed all of the reasons for which I may be transferred or discharged?

LICENSE/CERTIFICATION:

- Is the facility licensed by the state and in good standing?
- Is the facility Medicaid certified?

SPACE:

- Is the bedroom private or shared?
- Is the bathroom private or shared?
- Are the shared areas clean?
- Is there space for personal belongings?
- Does the floor plan allow for easy mobility for me?
- Are there private areas other than the bedroom for visits?

SAFETY:

- Is bathroom safety equipment installed or available if needed? (grab bars, raised toilet seat)

- Is there a call system?
- Are walkers/wheelchairs permitted?
- Are hallways and doorways wide enough for wheelchairs?

CARE PLANS:

- Am I involved in the care planning process?
- Is my family/responsible party involved?
- Is my physician or other health provider involved?
- Are the care plans updated to reflect changes in care needs?

PERSONAL SERVICES:

- Does the facility provide assistance with dressing?
- Does the facility provide assistance with bathing?
- How many times per week is bathing provided?
- Does the facility provide assistance with toileting or incontinency? Does this include assistance with bowel and bladder?
- Does the facility provide assistance with transfers from wheelchair to bed, etc.
- Does the facility provide assistance with medications?

STAFF:

- What is the operator/administrator's training?
- Do staff receive training to work with special needs or behaviors, such as dementia?
- Is there high staff turn-over?
- What is the ratio of staff to resident?
- Are staff awake at night?

MEALS:

- Are specialized diets available?
- Are cultural or ethnic preferences considered?
- Are residents involved in menu planning?
- Can residents help with meal preparation and have access to the kitchen?
- Are snacks/beverages readily available between meals?
- Are extra helpings and substitutions available?

SOCIALIZATION:

- Are activities available within the facility?
- Does the facility take residents on outings?
- Is somebody designated to conduct activities?
- Would my interests match the level/type of activities provided?
- Are there residents I can socialize with?
- Is there a written schedule of activities?
- Does the facility provide transportation?

COMMUNICATION:

- Does facility inform family/physician when an unusual event occurs?
- Do you feel comfortable talking with the Administrator/Operator, Manager/Billing, and or Staff/Caregivers?
- Is the grievance procedure easily understood?
- Is telephone use accessible and conducive to privacy?

- Have I toured the entire facility?
- Have I observed the kitchen and pantry?
- Have I observed a meal?
- Does the atmosphere seem pleasant?
- Does there seem to be enough staff available?
- Are pets allowed?
- Do residents seem happy and engaged?
- Do residents appear to be clean, groomed and odor-free?
- Have I observed staff/resident interaction?
- Have I observed for cleanliness and odors?

When making your final choice, keep these tips in mind:

- Trust your initial feelings and reactions.
- Try not to make a hasty decision. There are many homes from which to choose.
- Consider the location of the home.
- Make an unannounced visit after your initial tour.
- Talk to residents.
- Ask for references.
- Ask to take home copies of the admission packet and house rules.
- Take the time to review the materials and ask lots of questions.

Excerpted from the Colorado Department of Public Health and Environment brochure: How to Choose an Assisted Living Facility www.cdphe.state.co.us

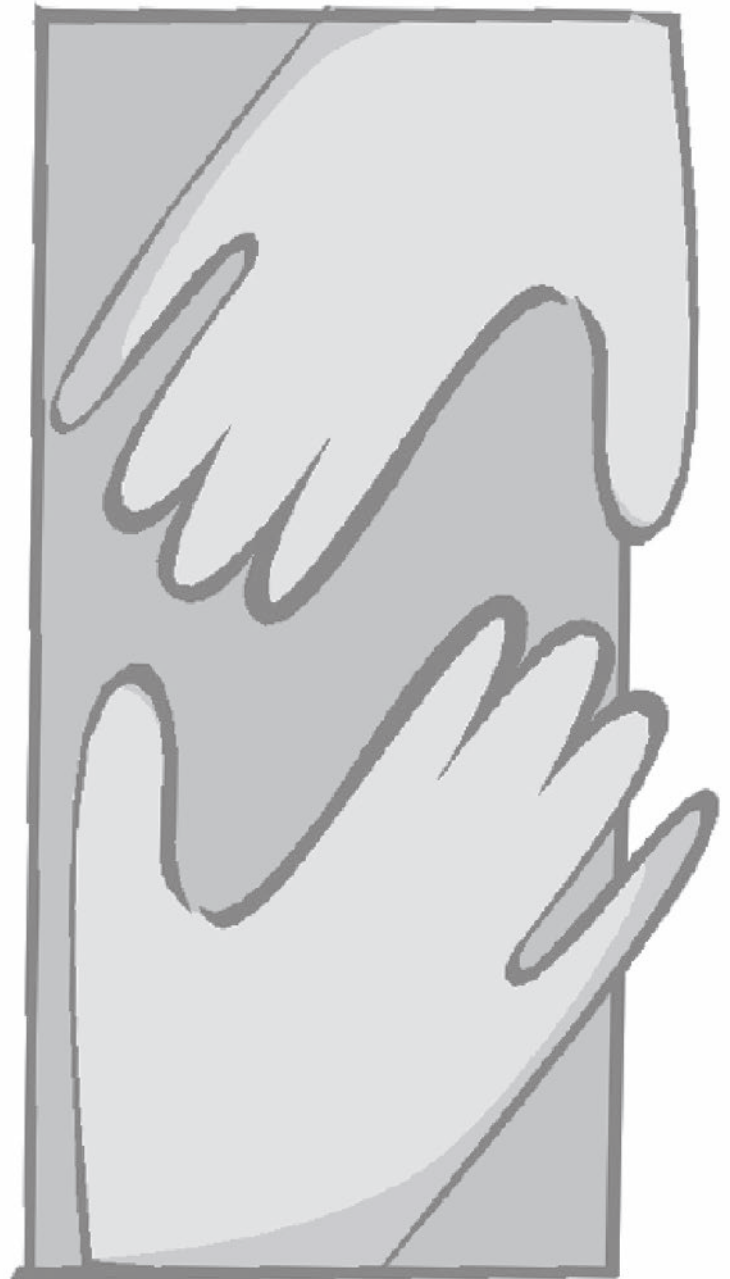
FACILITY TOUR/OBSERVATIONS:

Boulder County Long-Term Care Ombudsman Program

The Boulder County Long-Term Care Ombudsman Program is a free service for residents of long-term care facilities, including nursing homes and assisted living facilities. Residents of these facilities have specific rights which are part of state and federal regulations. An Ombudsman is an advocate for these rights. The services of the Ombudsman can be used by residents, their friends and relatives, facility staff, and the general public.

Long-Term Care Ombudsman:

- Help residents obtain necessary legal, social, recreational, physical, and emotional support services in long-term care facilities.
- Identify and investigate resident's concerns regarding their care.
- Problem-solve and mediate to reach equitable solutions to improve the quality of life of residents and to protect their rights.
- Assist facility staff in meeting the needs and concerns of residents through education and consultation.
- Advocate for improvements and changes in legislation and policies affecting long-term care.
- Educate the community about long-term care by providing factual information and access to available resources in the community.



For more information, contact Boulder County Aging Services: Long-Term Care Ombudsman Program at 303-441-1173

How to Pay for Long-Term Care

Financing Option	Only Available for Long-Term Care Costs	Remaining Funds Available to Heirs	Rate of Asset	Eligibility Requirement	Risk of Insufficient Funds	Cost
Family Support and Caregiving	No	No	None	No	Moderate	You pay for services that family members are unwilling to provide
Personal Savings	No	Yes	Variable	No	High	You are responsible for creating private savings
Long-Term Care Insurance	Yes	No	Fixed	Yes	Moderate to Low	Monthly premiums for the life of the policy
Limited Long-Term Care Insurance	Yes	No	Fixed	Yes	Moderate to Low	Large one-time or short-term monthly premium
Reverse Mortgages	No	Yes	Variable	Yes	Moderate	Processing and origination fees to establish mortgage
Continuing Care Retirement Community	Yes	Yes	Variable	Yes	Low	High purchase price and fixed monthly payment required of CCRC property
Veterans Benefits	No	No	None	Yes	Moderate to High	None
Medicare	No	No	None	Yes	Moderate to High	Co-payments and deductibles
Medicaid	No	No	None	Yes	High	You pay for services not covered by Medicaid

Adapted from Paying for Long-Term Care www.Medicare.gov

Medicaid

If your income and resources are limited, you may qualify for Medicaid. Medicaid will pay for custodial care in some assisted living facilities and in most nursing homes if eligibility criteria are met. For more information, contact the Boulder County Department of Housing and Human Services: Medicaid Program: 303-441-1000

Medicare

Medicare generally doesn't pay for long-term care. Medicare also doesn't pay for help with activities of daily living or other care that most people can do themselves. Medicare will help pay for skilled nursing or home health care if you meet certain conditions. For more information, contact the Boulder County Aging Services Division: Medicare Counseling Program 303-441-1546.

Facility Glossary of Terms

Activities

Planned social, recreational, and/or educational events within the building are offered either free of charge or for a nominal fee. Local or chartered trips are sometimes available.

Certified Staff

Staff trained to provide certain levels of care. Some facilities offer certified nursing assistants, licensed practical nurses, and registered nurses, along with physical, occupational, and speech therapists. All aides in nursing homes in Colorado are required to be certified.

Emergency Response

There is a system or device in place so that a resident can request emergency assistance.

Functional Assessment

The facility performs an assessment to determine the needed level of care.

Housekeeping

Linen service and cleaning is included in the rent.

Meals

Optional or required for 1 - 3 meals per day. Cost is separate or included in the rent. Some facilities do not offer a meal option.

Medication Supervision

Daily reminders to take medications. Facilities are prevented by law from dispensing medications unless certified staff people are present.

Personal Care Assistance

Assistance is given in one or more of the activities of daily living, such as bathing, dressing, grooming, and eating.

Pets

Some facilities allow pets, often with an additional pet deposit. Senior housing subsidized by HUD must accommodate some service animals.

Secure Alzheimer's Unit

The facility provides a locked or secure-unit or building for residents with Alzheimer's to provide extra security for residents who may wander.

Secure Building

The facility has a passcard or entry code, after-hours locking doors, a security staff, a check-in desk, or other method to ensure personal security for residents.

Short-Term Respite Care

Some facilities will accept residents on a short-term basis while their regular caregiver is away.

Social Services/Case Management

A member of the staff or another person who assists residents with problem-solving and securing resources to meet psychosocial and physical needs. Social services are provided in all nursing facilities and in some assisted living homes and subsidized housing sites.

Transportation

Some facilities have vans for local trips, doctor appointments, or shopping. Other facilities will help you make transportation arrangements.

24-hour Oversight

Staff is available to residents 24 hours a day.

Wheelchair Accessible Units

Units are specifically designed to meet the needs of a person using a wheelchair. Unit has wide doorways as well as modifications to the kitchen, bathroom, and other livings areas.

Boulder Facilities

INDEPENDENT LIVING

Public Unsubsidized

- | | | |
|----------|---|---------------------|
| 1 | The Academy
970 Aurora Ave., Boulder, CO 80302 | 303-938-1920 |
| 2 | Boulder Meridian
801 Gillaspie, Boulder, CO 80305 | 303-494-3900 |
| 3 | Dunn Memorial Senior Housing
4805 Baseline Rd., Boulder, CO 80303 | 303-554-2014 |
| 4 | Frasier Meadows Retirement Community
350 Ponca Place, Boulder, CO 80303 | 303-499-4888 |
| 5 | Golden West – Flatirons Terrace
930 28th Street, Boulder, CO 80303 | 303-939-0842 |
| 6 | Golden West – The Towers
1055 Adams Cir., Boulder, CO 80303 | 303-444-3967 |
| 7 | Presbyterian Manor
1050 Arapahoe Ave. Boulder, CO 80302 | 303-444-0642 |
| 8 | Villas at the Atrium Brookdale Senior Living
3350 30 th St., Boulder, CO 80301 | 303-444-0200 |
| 9 | The Carillon at Boulder Creek
2525 Taft Drive, Boulder, CO 80302 | 720-564-6844 |

Public Subsidized

- | | | |
|-----------|--|---------------------|
| 10 | Boulder Housing Partners
4800 N. Broadway, Boulder, CO 80304 | 720-564-4610 |
| 11 | Canyon Pointe
700 Walnut, Boulder, CO 80302 | 720-564-4610 |
| 12 | Northpoint
1133 Portland Place, Boulder, CO 80304 | 720-564-4610 |
| 13 | Walnut Place
1940 Walnut, Boulder, CO 80304 | 720-564-4610 |

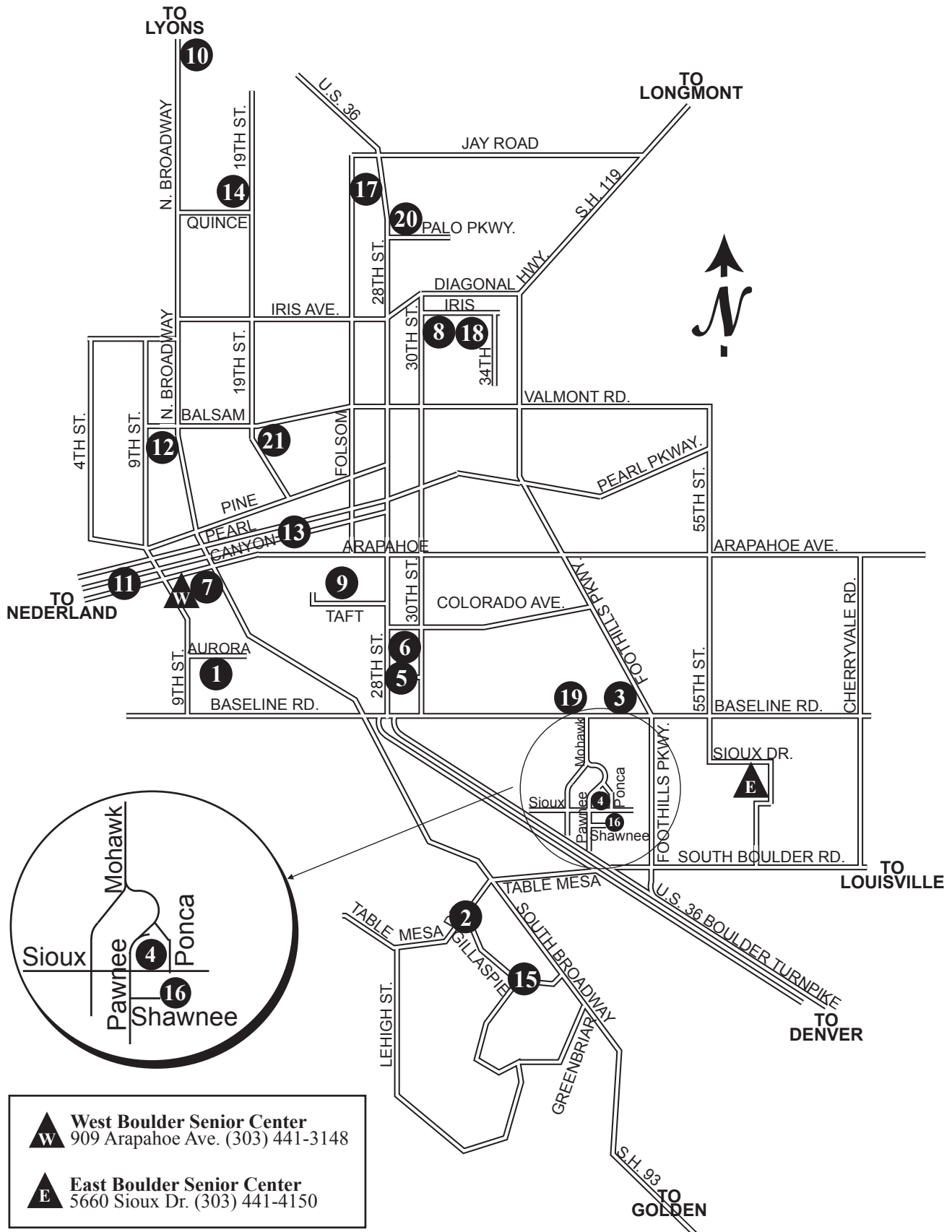
ASSISTED LIVING

- | | | |
|-----------|--|---------------------|
| 1 | The Academy
970 Aurora Ave., Boulder, CO 80302 | 303-938-1920 |
| 1 | The Academy at Bella Vista
970 Aurora Ave., Boulder, CO 80302 | 303-938-1920 |
| 14 | Anam Chara
1795 Quince St. Boulder, CO 80304 | 303-442-4484 |
| 4 | Frasier Meadows Retirement Community
4900 Thunderbird Dr., Boulder, CO 80303 | 303-499-4888 |
| 5 | Golden West – The Mezzanine
1055 Adams Cir., Boulder, CO 80303 | 303-444-3967 |
| 15 | Mary Sandoe House
1244 Gillaspie, Boulder, CO 80303 | 303-494-7317 |
| 16 | Shawnee Gardens
4755 Shawnee Place, Boulder, CO 80303 | 303-494-1123 |
| 17 | Sunrise Assisted Living
3955 28 th St., Boulder, CO 80301 | 720-406-1000 |
| 18 | Wynwood at Ridge Point
3375 34 th St., Boulder, CO 80301 | 303-473-0333 |
| 9 | The Carillon at Boulder Creek
2525 Taft Drive, Boulder, CO 80302 | 720-564-6844 |

SKILLED NURSING FACILITIES

- | | | |
|-----------|--|---------------------|
| 19 | Boulder Manor
4685 Baseline Rd., Boulder, CO 80303 | 303-494-0535 |
| 4 | Frasier Meadows Retirement Community
4950 Thunderbird Dr., Boulder, CO 80303 | 303-499-8412 |
| 20 | Manor Care
Palo Parkway, Boulder, CO 80301 | 303-440-9100 |
| 21 | Mesa Vista of Boulder County
2121 Mesa Dr., Boulder, CO 80304 | 303-442-4037 |

Boulder Locator Map



Boulder Reference Chart

	Application Fee	Medicaid	Medicare	Security Deposit	Accepts Section 8	Number of Units	Activities	Certified Staff	Emergency Response System	Functional Assessment	Housekeeping	Meals *Flexible or Vary
INDEPENDENT LIVING/SUBSIDIZED												
Canyon Pointe					•	82	•		•			
Northpoint					•	50	•		•			
Walnut Place					•	95	•		•			
INDEPENDENT LIVING/UNSUBSIDIZED												
The Academy				•		52	•	•	•	•	•	• *
The Carillon of Boulder Creek						117	•	•	•	•	•	•
Boulder Meridian	•			•		96		•	•			• *
Dunn Memorial Senior Housing				•	•	14		•	•			
Frasier Meadows Retirement Community	•					202		•	•			•
Golden West - The Towers	•			•	•	252	•		•			•
Presbyterian Manor	•			•	•	80						
The Villas at The Atrium						82	•		•		•	• *
Golden West - Flatirons Terrace	•			•		54	•		•		•	• *
ASSISTED LIVING												
The Academy	•			•		10	•	•	•	•	•	•
The Academy at Bella Vista	•			•		10	•	•	•	•	•	•
Anam Chara	•	•				10	•	•	•	•	•	•
The Carillon of Boulder Creek						117	•	•	•	•	•	•
Frasier Meadows Retirement Community						32	•	•	•	•	•	•
Golden West - Mezzanine	•	•		•		56	•	•	•	•	•	•
Mary Sandoe House		•		•		24	•		•	•	•	•
Shawnee Gardens	•			•		7	•	•	•	•	•	•
Sunrise Assisted Living of Boulder	•					84	•	•	•	•	•	•
Wynwood at Ridge Point						76	•		•	•	•	•
SKILLED NURSING FACILITIES												
Boulder Manor		•	•	•		165	•	•	•	•	•	•
Frasier Meadows Retirement Community		•	•			108	•	•	•	•	•	•
Manor Care		•	•			140	•	•	•	•	•	•
Mesa Vista of Boulder		•	•			162	•	•	•	•	•	•

Medication Supervision	Personal Care Assistance	Pets Allowed (Limited)	Pet Deposit	Secure Alzheimer's Unit	Secure Building	Short-Term Respite Care	Social Services	Transportation	24-Hour Oversight	Wheelchair Accessible Units	
		•	•		•					•	Canyon Pointe
		•	•		•					•	Northpoint
		•	•		•					•	Walnut Place
		•		•				•			The Academy
•	•	•	•	•	•	•	•	•	•	•	The Carillon of Boulder Creek
		•				•		•			Boulder Meridian
		•			•				•	•	Dunn Memorial Senior Housing
•	•	•			•			•	•	•	Frasier Meadows Retirement Community
		•	•						•	•	Golden West - The Towers
		•	•		•						Prebyterian Manor
		•	•			•		•	•	•	The Villas at The Atrium
		•	•					•		•	Golden West - Flatirons Terrace
•	•	•						•	•	•	The Academy
•	•	•		•		•		•	•	•	The Academy at Bella Vista
•	•	•				•	•	•	•	•	Anam Chara
•	•	•	•	•	•	•	•	•	•	•	The Carillon of Boulder Creek
•	•	•					•	•	•	•	Frasier Meadows Retirement Community
•	•	•	•						•	•	Golden West - Mezzanine
•	•	•	•						•	•	Mary Sandoe House
•	•	•	•		•	•	•	•	•	•	Shawnee Gardens
•	•	•		•	•	•	•	•	•	•	Sunrise Assisted Living of Boulder
•	•	•	•			•		•	•	•	Wynwood at Ridge Point
•	•	•			•	•	•	•	•	•	Boulder Manor
•	•			•	•	•	•	•	•	•	Frasier Meadows Retirement Community
•	•			•	•	•	•	•	•	•	Manor Care
•	•	•		•	•	•	•	•	•	•	Mesa Vista of Boulder

Longmont Housing Facilities

INDEPENDENT LIVING

Private Unsubsidized

1. Applewood Villa 303-776-6081
1805 Stroh Place, Longmont, CO 80501
2. Aspen Meadows 303-485-5232
70 21st Ave., Longmont, CO 80501
3. Longmont Regent 303-651-7022
2210 N. Main St., Longmont, CO 80501
4. St. Vrain Manor 303-776-3785
606 Pratt St., Longmont, CO 80501
5. Tanglewood Condominiums 303-774-0300
100 21st Ave., Longmont, CO 80501
6. Village Place 303-678-5416
600 Coffman, Longmont, CO 80501
7. Hover Manor 303-772-9292
1401 Elmhurst Dr., Longmont, CO 80503
8. The Vistas in Longmont 303-678-5050
2310 9th Ave., Longmont, CO 80503
9. The Lodge at Hover Crossing 303-776-6518
2127 18th Ave., Longmont, CO 80501

Private Subsidized

10. Long's Peak Residence 303-651-3601
2139 Emery St., Longmont, CO 80501
11. Mountain View Plaza 303-776-9103
1350 Collyer St. #100, Longmont, CO 80501

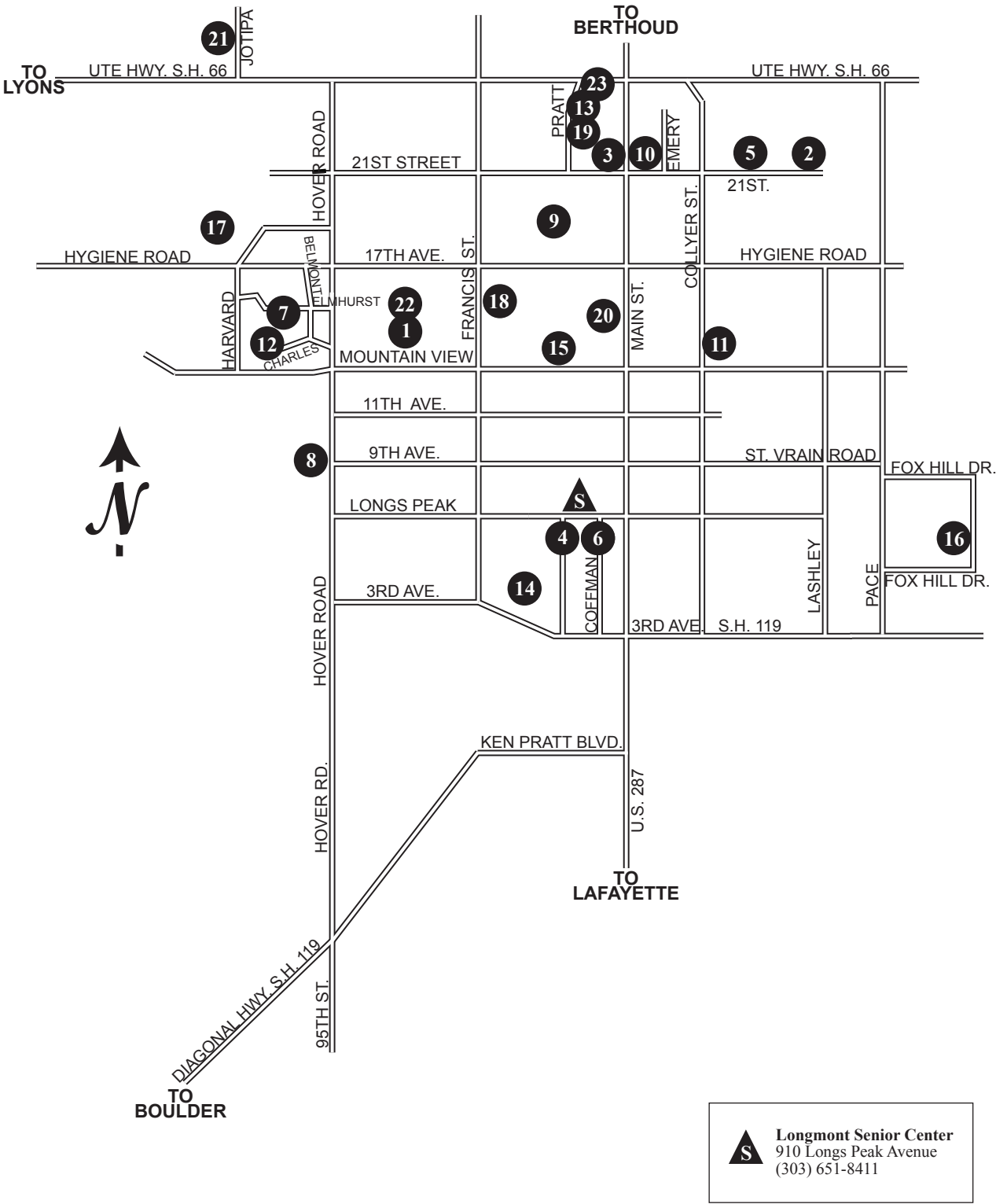
ASSISTED LIVING

12. Beatrice Hover Assisted Living Residence 303-772-9292
1380 Charles Dr., Longmont, CO 80503
13. The Bridge 303-774-8255
2444 Pratt St., Longmont, CO 80501
14. Bross Street 303-682-5095
537 Bross St. Longmont, CO 80501
15. Cinnamon Park 303-772-2882
1335 Cinnamon St., A & B, Longmont, CO 80501
16. Millbrook Homes 303-220-7989
5011 Fox Hill Dr., Longmont, CO 80501
17. Millbrook Homes 303-220-7989
1746 Cove Ct., Longmont, CO 80501
18. Safe Harbor 303-776-4384
1424 16th Ave., Longmont, CO 80501
19. Sterling House 303-776-2814
2240 Pratt St., Longmont, CO 80501
20. The Peaks Care Center 303-776-2814
1440 Coffman St., Longmont, CO 80501
21. Timberline Lodge 303-776-7215
9198 Jotipa Dr., Longmont, CO 80501
8. The Vistas in Longmont 303-678-5050
2310 9th Ave., Longmont, CO 80503

SKILLED NURSING FACILITIES

22. Applewood Living Center 303-776-6081
1800 Stroh Place, Longmont, CO 80501
23. Life Care Center 303-776-5000
2451 Pratt St., Longmont, CO 80501
20. The Peaks Care Center 303-776-2814
1440 Coffman St., Longmont, CO 80501

Longmont Locator Map



Longmont Reference Chart

	Application Fee	Medicaid	Medicare	Security Deposit	Accepts Section 8	Number of Units	Activities	Certified Staff	Emergency Response System	Functional Assessment	Housekeeping	Meals *Flexible or Vary
INDEPENDENT LIVING/SUBSIDIZED												
Longs Peak Residence	•			•		50	•		•			
Mountain View Plaza				•	•	80	•		•			
The Lodge at Hover Crossing				•		50	•		•			
INDEPENDENT LIVING/UNSUBSIDIZED												
Aspen Meadows	•			•	•	47	•	•	•			
Applewood Villa						8	•				•	•
Hover Manor				•	•	120	•		•			•
Longmont Regent						96	•		•		•	
St. Vrain Manor				•		73	•					
Tanglewood				•	•	31	•					
Village Place	•			•	•	72	•		•			
The Vistas in Longmont						46			•		•	•
ASSISTED LIVING												
Beatrice Hover				•		51	•	•	•	•	•	•
The Bridge	•					62	•	•	•	•	•	•
Bross Street	•					10	•	•	•	•	•	•
Cinnamon Park		•				48	•	•	•	•	•	•
Millbrook Homes (2)				•		10	•	•		•	•	•
The Peaks		•				20	•		•	•	•	•
Safe Harbor	•					6	•	•	•		•	•
Sterling House						41	•	•	•	•	•	•
Timberline Lodge	•	•				10	•	•		•	•	•
The Vistas in Longmont						79	•		•		•	•
SKILLED NURSING FACILITIES												
Applewood Living Center		•	•			107	•	•	•	•	•	•
LifeCare Center		•	•			182	•	•	•	•	•	•
The Peaks Care Center		•	•			83	•	•	•	•	•	•

Medication Supervision	Personal Care Assistance	Pets Allowed (Limited)	Pet Deposit	Secure Alzheimer's Unit	Secure Building	Short-Term Respite Care	Social Services	Transportation	24-Hour Oversight	Wheelchair Accessible Units	
	•	•			•				•	•	Longs Peak Residence
		•	•		•					•	Mountain View Plaza
		•	•		•			•	•	•	The Lodge at Hover Crossing
					•			•		•	Aspen Meadows
		•	•		•			•		•	Applewood Villa
		•	•		•			•		•	Hover Manor
		•			•	•		•	•	•	Longmont Regent
											St. Vrain Manor
		•	•		•			•	•	•	Tanglewood
		•	•		•			•	•	•	Village Place
		•	•		•	•		•	•	•	The Vistas in Longmont
•	•	•	•		•	•		•	•	•	Beatrice Hover
•	•	•	•			•		•	•	•	The Bridge
•	•	•	•			•		•	•	•	Bross Street
•	•	•	•			•	•		•	•	Cinnamon Park
•	•	•	•	•	•	•	•		•	•	Millbrook Homes (2)
•								•	•		The Peaks
•	•					•					Safe Harbor
•	•	•	•			•		•	•	•	Sterling House
•	•	•			•			•	•	•	Timberline Lodge
•	•	•	•	•	•	•		•	•	•	The Vistas in Longmont
•	•			•	•	•	•	•	•	•	Applewood Living Center
•	•			•	•	•	•	•	•	•	LifeCare Center
•	•			•	•	•	•	•	•	•	The Peaks Care Center

Erie, Lafayette, and Louisville Housing Facilities

INDEPENDENT LIVING

Erie

1. Victor F. Smith Senior Housing 720-564-2284
800 High St., Erie, CO 80516

Lafayette

2. Villa West I & II 720-564-2284
450 S. Carr Ave., Lafayette, CO 80026

Louisville

4. The Lodge at Balfour 303-926-8300
1331 Hecla Dr., Louisville, CO 80027
5. Lydia Morgan 720-564-2284
1450 Lincoln Ave., Louisville, CO 80027
6. Regal Square 720-564-2284
255 Regal, Louisville, CO 80027

ASSISTED LIVING

Lafayette

7. The Legacy 303-666-0691
225 Waneka Parkway, Lafayette, CO 80026

Louisville

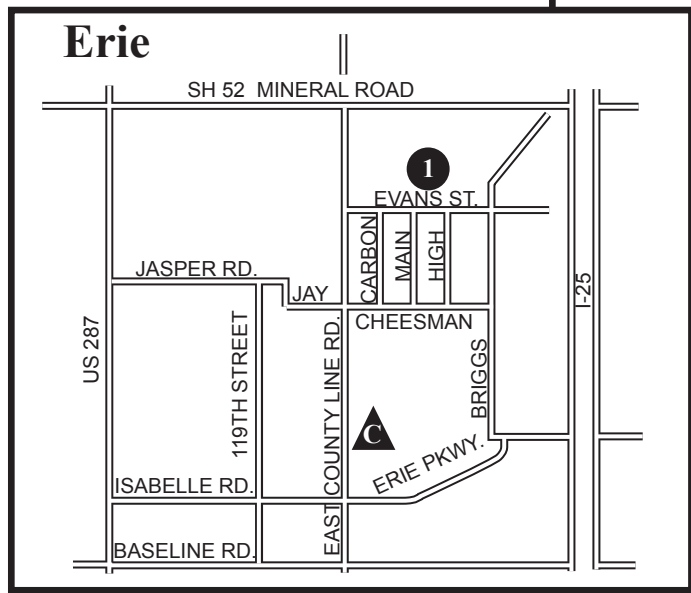
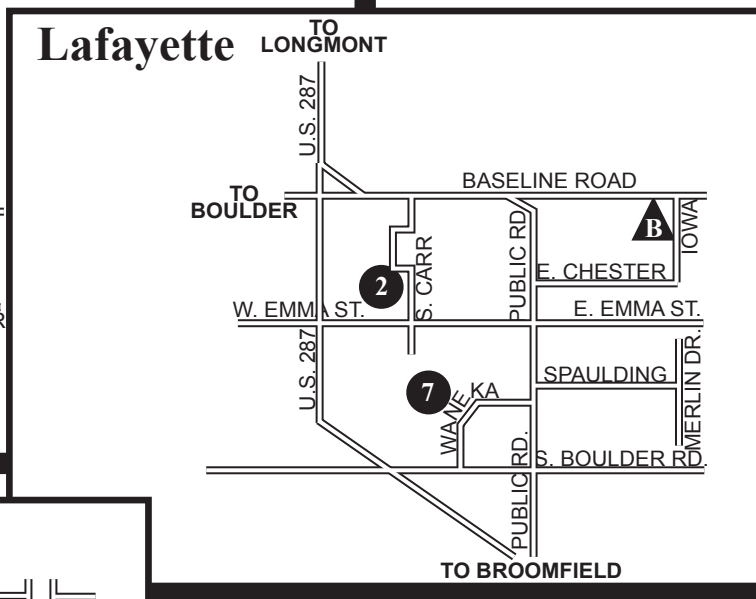
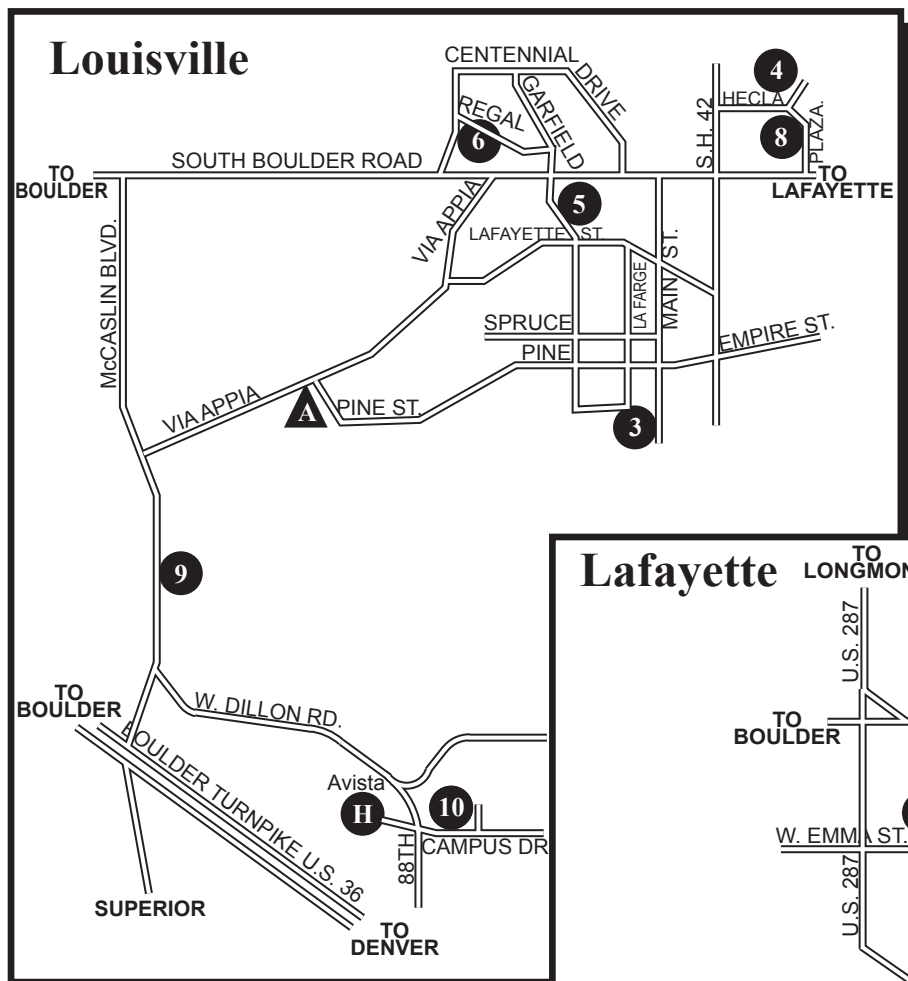
8. Balfour Retirement Community
(The Villas) 303-926-1000
1855 Plaza Dr., Louisville, CO 80027
9. Balfour Cherrywood Village 303-604-2700
282 McCaslin Blvd., Louisville, CO 80027
10. Juniper Village 303-665-3722
1078 S. 88th St., Louisville, CO 80027

SKILLED NURSING FACILITIES

Louisville

8. Balfour Retirement Community
(The Villas) 303-926-1000
1855 Plaza Dr., Louisville, CO 80027

Erie, Lafayette, and Louisville Locator Maps



- A Louisville Senior Center**
900 West Via Appia
(303) 666-7400
- B Lafayette Senior Center**
103 S. Iowa Ave.
(303) 665-9052
- C Erie Community Center**
450 Powers Street
(303) 926-2550

Lyons, Nederland, and Niwot Housing Facilities

INDEPENDENT LIVING

Lyons

1. Bloomfield Place 720-564-2284
722 5th Ave., Lyons, CO 80540
2. Walter Self Senior Housing 720-564-2284
335 Railroad Ave., Lyons, CO 80540

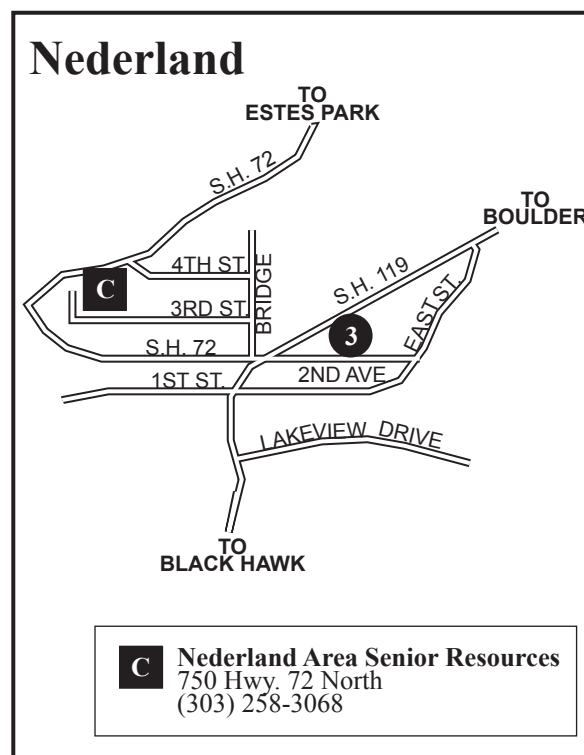
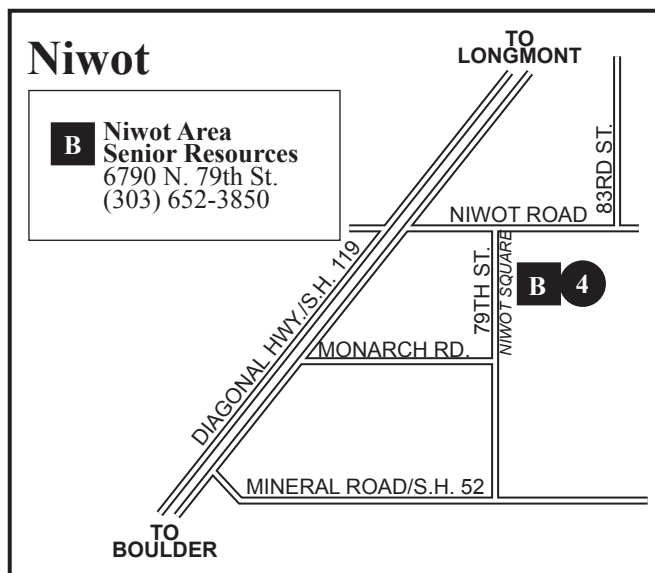
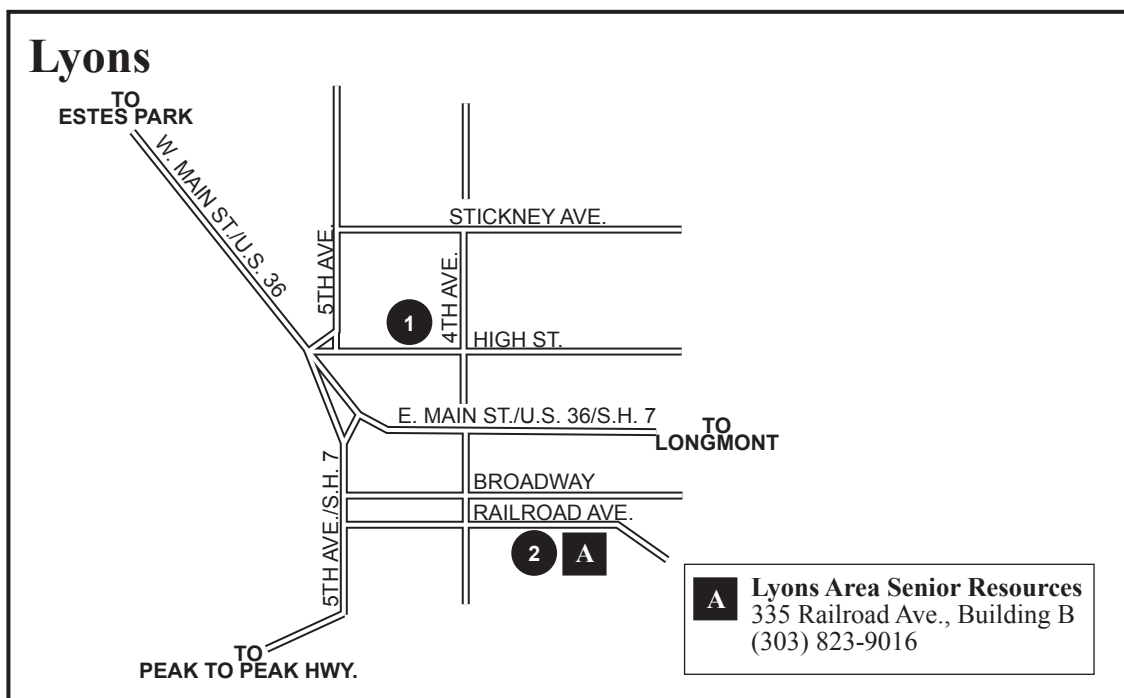
Nederland

3. Prime Haven 720-564-2284
107 E. 2nd Ave., Nederland, CO 80466

Niwot

4. Eagle Place 720-564-2284
6790 N. 79th St., Niwot, CO 80544

Lyons, Nederland, and Niwot Locator Maps



Erie, Lafayette, Louisville, Lyons, Nederland & Niwot Reference Chart

	Application Fee	Medicaid	Medicare	Security Deposit	Accepts Section 8	Number of Units	Activities	Certified Staff	Emergency Response System	Functional Assessment	Housekeeping
INDEPENDENT LIVING/SUBSIDIZED											
Bloomfield Place/Lyons				•		8			•		
Eagle Place at Niwot				•		12			•		
Prime Haven/Nederland				•		6			•		
Regal Square/Louisville				•		30	•		•		
Villa West/Lafayette	•			•	•	28	•		•		
Walter Self/Lyons				•		12	•		•		
INDEPENDENT LIVING/UNSUBSIDIZED											
Lydia Morgan/Louisville	•			•	•	30			•		
Victor F. Smith/Erie	•			•	•	12			•		
Villa West II/Lafayette	•			•	•	12	•		•		
The Lodge at Balfour						103	•		•		•
ASSISTED LIVING											
Balfour Cherrywood Village				•		52		•	•	•	•
Balfour Retirement Community/Louisville				•		62		•	•	•	•
Juniper Village at Louisville			•			52		•	•	•	•
The Legacy at Lafayette		•		•		65		•	•	•	•
SKILLED NURSING FACILITIES											
Balfour Retirement Community/Louisville						76		•	•	•	•

Meals	*Flexible or Vary	Medication	Supervision	Personal Care	Assistance	Pets Allowed (Limited)	Pet Deposit	Secure	Alzheimer's Unit	Secure Building	Short-Term Respite Care	Social Services	Transportation	24-Hour Oversight	Wheelchair	Accessible Units	
						•	•										Bloomfield Place/Lyons
						•	•										Eagle Place at Niwot
						•	•										Prime Haven/Nederland
						•	•										Regal Square/Louisville
						•	•								•		Villa West/Lafayette
						•	•								•		Walter Self/Lyons
						•	•										INDEPENDENT LIVING/UNSUBSIDIZED
						•	•										Lydia Morgan/Louisville
						•	•										Victor F. Smith/Erie
						•	•										Villa West II/Lafayette
•						•	•			•			•		•		The Lodge at Balfour
																	ASSISTED LIVING
•		•		•				•		•	•			•	•	•	Balfour Cherrywood Village
•		•		•		•	•				•	•	•	•	•	•	Balfour Retirement Community/Louis
•		•		•		•	•	•		•	•	•	•	•	•	•	Juniper Village at Louisville
•		•		•							•		•	•	•	•	The Legacy at Lafayette
																	NURSING HOMES
•		•		•				•		•	•	•	•	•	•	•	Balfour Retirement Community/Louis

OTHER PRIVATE OPTIONS

Private Purchase Housing

The private purchase of a home or condominium in a 55+ community.

Silver Sage 303-786-8070
1650 Yellow Pine Avenue, Boulder, CO 80304
www.silversagevillage.com

The Villas at Pleasant Valley 303-772-7600
2463 Santa Fe Drive, Longmont, CO 80503
www.villasatpleasantvalley.com

Hover Village 303-682-0098
Elmhurst Place (north of Beatrice Court),
Longmont, CO 80503
www.flagstaffmanagement.com

West Point Village 303-776-6291
Spencer & Tulip Area, Longmont, CO 80501
www.pmlinc.net

Aspen Grove Village HOA 303-772-8569
17th Avenue & Francis Street, Longmont, CO 80501
www.aspengroveowners.com

Forest Park Village 303-665-9390
1355 Forest Park Circle, Lafayette, CO 80026

55+ Mobile Home Parks

Some mobile home parks are designated for older adults 55+. A person may already own their own mobile home, or the park manager may be able to inform the caller of homes that are for sale.

Grand Meadow 720-494-0751
821 17th Street, Longmont, CO 80501
www.aboutarc.com

Arbordale Acres 303-665-6457
507 E. Spaulding, Lafayette, CO 80026
www.kingsleyliving.com

Royal Mobile Park 303-651-0251
10 Prince Street, Longmont, CO 80501

Mountain View Court 303-772-0911
900 Mountain View, Longmont, CO 80501

Resources for Senior Relocation Services

A Place for Everything 303-887-7681
23735 Bluestem Drive, Golden, CO 80401
www.aplaceforeverythingllc.com
Certified and insured member of National Association of Senior Move Managers (NASMM)

Moving On with Style 303-956-7134
12613 Zuni Street, Unit 106, Broomfield, CO 80020
www.moving-on-with-style.com
Licensed and insured.

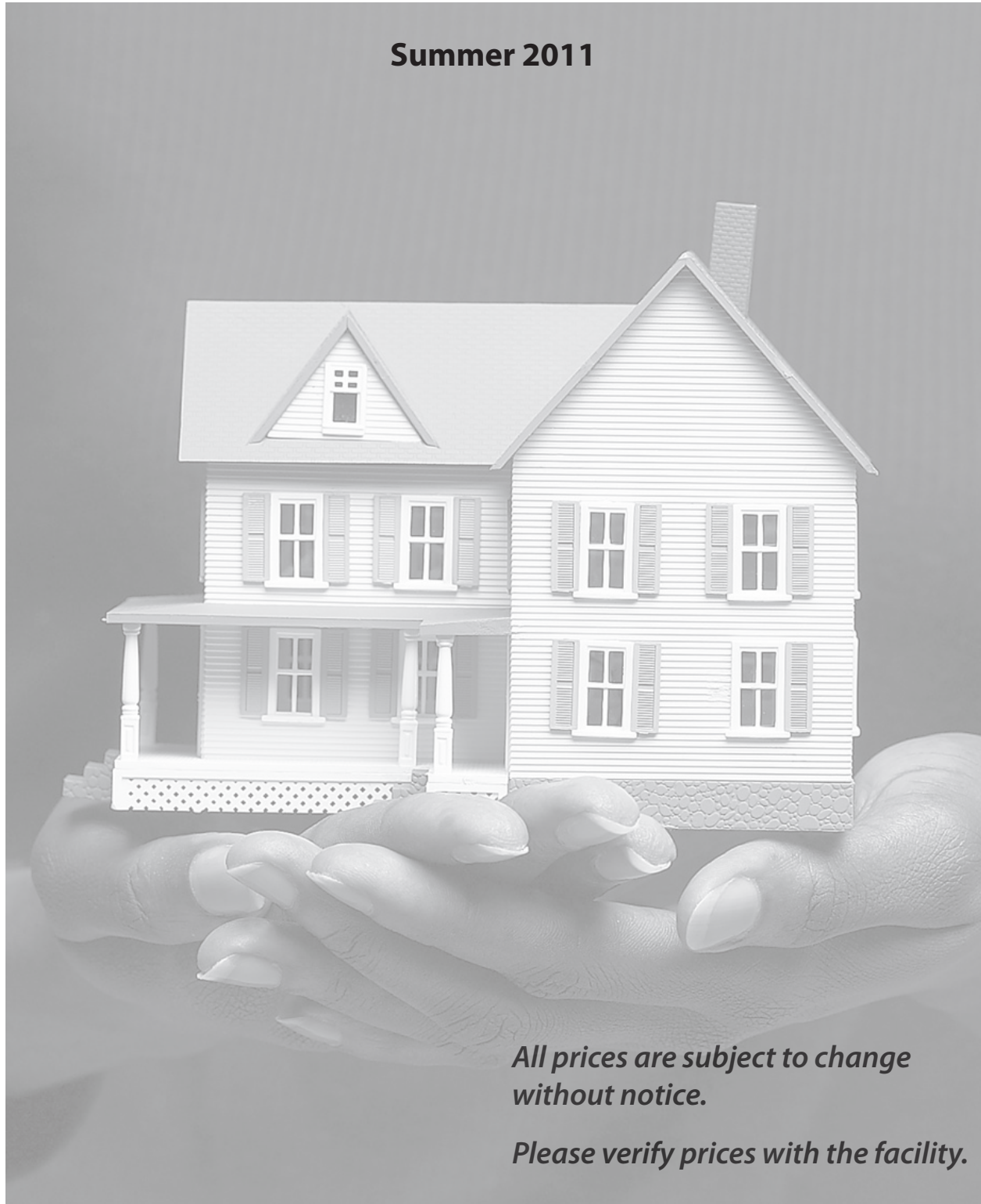
Project Relo 303-931-2977
601 S. Bowen Street, Longmont, CO 80501
www.projectrelo.com

Senior Options Services 303-880-3313
8101 E. Belleview Ave. #F, Denver, CO 80237
Certified and insured member of National Association of Senior Move Managers (NASMM)

Managing Your Move 303-437-7875
Fax: 303-325-7021
www.managingyourmove.com
Certified and insured member of National Association of Senior Move Managers (NASMM)

HOUSING PRICES For Boulder County

Summer 2011



*All prices are subject to change
without notice.*

Please verify prices with the facility.

Erie, Lafayette and Louisville

INDEPENDENT LIVING

MONTHLY RATES

Lafayette Villa West I 450 S. Carr Ave., Lafayette, CO 80026 720-564-2284	\$200 security deposit. \$750 + rent + electricity. \$200 pet deposit.
Lafayette Villa West II 490 S. Carr Ave., Lafayette, CO 80026 720-564-2284	\$750 plus electricity. Pets less than 30 lbs.: \$200 deposit plus \$200 security deposit. Accepts Section 8. Not 30% of income, not income restricted.
The Lodge at Balfour 1331 Hecla Dr., Louisville, CO 80027 303-9260-8300	Community fee: \$5000. Monthly fees ranging in price from \$3,650 - \$6,850.
Lydia Morgan 1450 Lincoln Ave., Louisville, CO 80027 720-564-2284	\$730 plus electricity, \$200 security deposit, \$200 pet deposit.
Regal Square 255 Regal, Louisville, CO 800027 720-564-2284	30% of adjusted gross income. No Section 8, income restricted. Wait list only, wait list closed. \$200 pet deposit. Security deposit varies.
Victor F. Smith Senior Housing 800 High St., Erie, CO 80516 720-564-2284	\$200 security deposit. Rent varies + gas + electricity, income restricted.

Updated Spring 2011, Boulder County Aging Services.
Prices are subject to change without notice.

2011 Housing Prices

Erie, Lafayette and Louisville

ASSISTED LIVING FACILITIES

MONTHLY RATES

Balfour Cherrywood Village 282 McCaslin Blvd., Louisville, CO 80027 303-604-2700	Semi and private room: \$4900 - \$5900 \$2000 community fee. No extra fees for level of care. Respite Care and Adult Day Care are available. www.balfourcare.com
Balfour Retirement Community 1855 Plaza Dr., Louisville, CO 80027 303-926-1000	\$4069 - \$6040. \$2500 move-in fee.
Juniper Village at Louisville 1078 S. 88 th St., Louisville, CO 80027 303-665-3722	\$4835: private room – no shower \$5095: private room – with shower \$1000 community fee.
The Legacy 225 Waneka Parkway, Lafayette, CO 80026 303-666-0691	\$2850 - \$4040 depending on floor plan. Security deposit is half a month's rent.

SKILLED NURSING FACILITIES

DAILY RATES

Balfour Retirement Community 1855 Plaza Dr., Louisville, CO 80027 303-926-1000	\$232 - \$235 for semi-private \$275 - \$279 for private.
--	--

2011 Housing Prices

Boulder

INDEPENDENT LIVING	MONTHLY RATES
<p>The Academy 970 Aurora Ave., Boulder, CO 80302 303-938-1920</p>	<p>1BR, 2BR and 2BR w/den, apts, and houses: \$5500 and up, depending on location. Includes meals, transportation, and an abundance of other services and amenities. Membership fee: \$90,000/\$120,000. Ownership or rental options available.</p>
<p>Boulder Meridian 801 Gillaspie, Boulder, CO 80305 303-494-3900</p>	<p>1BR: starting at \$2750. 2BR: starting at \$3480. 2nd person fee: \$375. Includes continental breakfast plus 180 meals a year. One-time community fee: \$2,000. On-site home health care agency available.</p>
<p>Dunn Memorial Senior Housing 4805 Baseline Rd., Boulder CO 80303 303-554-2014</p>	<p>All one-bedroom units cost \$751 per month. Includes water, cable TV, and parking. Heat and electric extra. Accepts subsidized housing vouchers.</p>
<p>The Carillon at Boulder Creek 2525 Taft Drive, Boulder, CO 80302 720-565-6844</p>	<p>Residency Fee of \$4,000. For pet owners, a one-time fee of \$350. Rent ranges from \$3,500 to \$6,000 per month (2nd person additional \$500 per month). Monthly rent includes a \$300 meal credit, weekly housekeeping and linen service, basic cable TV, all utilities (except telephone), social & recreational programs, unlimited use of all activity areas, scheduled transportation, emergency communication system & free parking space in secured garage.</p>

2011 Housing Prices

Frasier Meadows Retirement Community 350 Ponca Place, Boulder, CO 80303 303-499-4888	Entrance Fee: (one person) Studio: \$58,900 - \$119,600 1BR: \$121,400 - \$246,700 2BR: \$187,600 - \$591,800 2nd Person Additional Entrance Fee: \$30,000 Rent: (per month, one person) Studio: \$1,100 - \$1,400 1BR: \$1,533 - \$3,180 2BR: \$1,923 - \$3,580 2nd Person Additional Rent: \$595
Golden West – Flatirons Terrace 930 28th St., Boulder, CO 80303 303-939-0842	1BR: \$2,745 to \$3,213. 2BR: \$2,836 to \$4,441. 1BR with den: \$3,006 to \$3,289. Community fee: \$2,500.
Golden West – The Towers 1055 Adams Cir., Boulder, CO 80303 303-444-3967	Studio: \$916 to \$995. 1BR: \$1,249 to \$1,329. 2nd person fee: \$266
Presbyterian Manor 1050 Arapahoe Ave., Boulder, CO 80302 303-444-0642	Efficiency: \$520 to \$597. 1BR: \$712. 2BR (2 people only): \$826. Admin fee: \$750. Application fee: \$20.
Villas at the Atrium Brookdale Sr. Living 3350 30th St., Boulder, CO 80301 303-444-0200	Studio: \$2,300. 1BR: \$2,775. 1BR with den: \$3,210. 2BR, 2BA: \$4,295, plus \$500 for 2nd person fee. Includes 3 meals a day, all utilities, underground parking, housekeeping, linen service, transportation and basic care. Community fee: \$2,000. Pet deposit: %500.

2011 Housing Prices

INDEPENDENT LIVING

Public Subsidized

MONTHLY RATES

Boulder Housing Partners 4800 N. Broadway, Boulder, CO 80304 720-564-4610	30% of adjusted gross income or 10% of income, whichever is higher. Senior buildings include: Canyon Pointe, Northport & Walnut Place. Canyon Pointe is site based Section 8, income limits 1 person: \$18,850, 2 people: \$21,550, deposit 1 month's rent. Other sites income guidelines: 1 person: yearly income of \$45,100, 2 people: \$51,550, deposit \$200.
--	---

ASSISTED LIVING FACILITIES

MONTHLY RATES

The Academy 970 Aurora Ave., Boulder, CO 80302 303-938-1920	Studio or 1BR: \$5,500 to \$7,500. All inclusive; exquisite dining; integrated with independent community; personal transportation. Oversight by Registered Nurse. Membership fee: \$5,000.
The Academy at Bella Vista 970 Aurora Ave., Boulder CO 80302 303-938-1920	One room: \$9,100 monthly all inclusive. Secured memory care. Private room and private bath. 3:1 resident to staff ratio. \$5,000 entrance fee. All inclusive.
Anam Chara 1795 Quince Ave., Boulder, CO 80304 303-442-4484	\$5,136 includes all meals, sliding fee scale. Couples-adjusted fee; Integrated wellness. Admissions fee: \$1,000. Accept Medicaid.

2011 Housing Prices

<p>The Carillon at Boulder Creek 2525 Taft Drive, Boulder, CO 80302 720-565-6844</p>	<p>Residency Fee of \$4,000. For pet owners, a one-time fee of \$350. Rent ranges from \$3,500 to \$6,000 per month (2nd person additional \$500 per month). Monthly rent includes a \$300 meal credit, weekly housekeeping and linen service, basic cable TV, all utilities (except telephone), social & recreational programs, unlimited use of all activity areas, scheduled transportation, emergency communication system & free parking space in secured garage. For an additional cost, residents may choose care services such as assistance with medications, showering/bathing/dressing, mobility, coordination of care, and assistance with health maintenance.</p>
<p>Frasier Meadows Retirement Community 4900 Thunderbird Dr., Boulder, CO 80303 720-562-4463</p>	<p>Member* rates for studio styles, including standard, enhanced or deluxe, and range from \$3,131 to \$4,632. Non-member rates for these styles range from \$3,407 to \$5,786. Member rate for 1BR with patio: \$4,977; non-member rate for 1BR with patio: \$6,221. Member rate for 2BR: \$6,337; non-member rate for 2BR: \$8,509. *Members are residents who live in Frasier Meadows Retirement Community and who have paid an Entrance Fee.</p>
<p>Golden West – The Mezzanine 1055 Adams Cir., Boulder, CO 80303 303-444-3967</p>	<p>\$3,965 which includes rent, utilities, telephone, cable TV, meals and services such as medication administration. \$200 move-in fee. Accept Medicaid.</p>
<p>Mary Sandoe House 1244 Gillaspie, Boulder, CO 80303 303-494-7317</p>	<p>One room \$3,360. Accepts HCBS and Medicaid.</p>

2011 Housing Prices

Shawnee Gardens 4755 Shawnee Place, Boulder, CO 80303 303-494-1123	Private room: \$4,000 to \$4,700, depending on level of care. Community fee: \$1,000. All inclusive (Hospice care also); 5:1 resident to staff ratio. Take a virtual tour at www.shawnee-gardens.com .
Sunrise Assisted Living 3955 28 th St. Boulder, CO 80301 720-406-1000	Studios, one-bedroom and two-bedroom suites. Companion apartments: \$107 to \$122 per day; small studio private apartments begin at \$119. Large two-bedroom suites: \$180 and up. Care plans for assisted living and secure memory care.
Wynwood at Ridge Point 3375 34 th St., Boulder, CO 80301 303-473-0333	Studio: \$3,260 or \$3,475. 1BR: \$3,965 or \$4,290. 2BR: \$4,950. Price depends on room type, room size, and view. Move-in fee: \$2,000, add \$1,000 for 2 nd person.

SKILLED NURSING FACILITIES

DAILY ROOM RATES (All accept Medicaid)

Boulder Manor 4685 Baseline Rd., Boulder, CO 80303 303-494-0535	Semi-private: \$226. Private: \$252. Custom suite: \$239.
Frasier Meadows Retirement Community 4950 Thunderbird Dr., Boulder, CO 80303 303-499-8412	Member* rates for skilled private \$255; for skilled semi-private \$218. Non-member rates for skilled private \$333; for skilled semi-private \$289. Recuperative Care is available for up to six months while member retains an apartment in independent or assisted living; 30 days per calendar year, per apartment - semi-private: N/C, private: \$160. After the first 30 days per calendar year – semi-private: \$175, private: \$195. Accept Medicare, Evercare, Medicaid and private payment. *Members are residents who live in Frasier Meadows Retirement Community and who have paid an Entrance Fee.

2011 Housing Prices

Manor Care 2800 Palo Parkway, Boulder, CO 80301 303-440-9100	Standard: semi-private: \$220; private: \$270. Heritage: semi-private: \$238; private: \$275 Arcadia Alzheimer's: semi-private: \$347; private: \$283 Complex Care: semi-private: \$397; private: \$476.
Mesa Vista of Boulder 2121 Mesa Dr., Boulder, CO 80304 303-442-4037	Semi-private: \$198. Private: \$250.

Updated Spring 2011, Boulder County Aging Services.
Prices are subject to change without notice.

2011 Housing Prices

Longmont INDEPENDENT LIVING

Private Subsidized

MONTHLY RATES

Long's Peak Residence 2139 Emery Street Longmont, CO 80501 303-651-3601	30% of net. All utilities paid (excludes phone & cable).
Mountain View Plaza 1350 Collyer Street, #100 Longmont, CO 80501 303-776-9103	HUD. 1 & 2BR: 30% of gross income after non-reimbursable medical expenses are subtracted.
The Lodge at Hover Crossing 2127 18 th Avenue Longmont, CO 80501 303-776-6518	Security deposit = one month's rent, 30% of adjusted gross income, small pets allowed with additional deposit.

INDEPENDENT LIVING

Private Unsubsidized

MONTHLY RATES

Applewood Villa 1805 Stroh Place Longmont, CO 80501 303-776-6081	Studio: \$650 with a 6 month lease. Includes all meals, laundry, housekeeping, utilities and cable TV.
Aspen Meadows 70 21 st Avenue Longmont, CO 80501 303-485-5232	1 BR: \$730 (w/12-mo lease). \$669 move-in special becomes first month's rent. 2 Br: \$743 move-in special becomes first month's rent. Background check: \$25. Utilities except phone or cable.

2011 Housing Prices

Hover Manor 1401 Elmhurst Drive Longmont, CO 80503 303-772-9292	1 BR Legacy model: \$785. 1 BR Millenium Deluxe: \$890. 1 BR Millenium model: \$885. Includes all utilities and cable (excludes phone). Van service (for fee). Maintenance on call 24 hours. Chapel available. Meal program available. Security deposit equal to 1 month's rent.
Longmont Regent 2210 N. Main Street Longmont, CO 80501 303-651-7022	Studio: \$1,755 - \$1830. 1 BR: \$2,310 - \$2,540. 2 BR: \$3,110 - \$3,290. Includes all meals, housekeeping, buy transportation. All utilities, includes cable TV. 24-hour manager on site.
St. Vrain Manor 606 Pratt Street, #106 Longmont, CO 80501 303-776-3785	Studio: \$343. 1 BR: \$455. 2 BR: \$662. Large 2 BR: \$685. Occupancy fee: \$1,415 - \$2,900. All utilities included, except phone, cable TV and air conditioning. 24 hour manager on site.
Tanglewood Condominiums 100 21 st Avenue Longmont, CO 80501 303-774-0300	1 BR: \$1,240 - \$1,320. 2 BR: \$1,405 - \$1,625. All utilities included. Damage deposit is one month's rent. \$50 more per month for pet.
Village Place 600 Coffman Longmont, CO 80501 303-678-5416	Studio: \$555. Small BR: \$675. Large BR: \$710 - \$739. 2 bed/1 bath: \$858/mo. 2 bed/2 bath: \$858. Rent does not include phone or cable TV. Background check: \$27.
The Vistas in Longmont 2310 9 th Ave. Longmont, CO 80501 303-678-5050	Call for pricing information. 1BR and 2BR. Freshly prepared meals, outings, housekeeping, and beauty & barber shop.

2011 Housing Prices

ASSISTED LIVING FACILITIES

MONTHLY RATES

Beatrice Hover Assisted Living Residence 1380 Charles Drive Longmont, CO 80503 303-772-8102	Studio: \$3,150. 1 BR: \$4,150. Double suite: \$5,800. All inclusive meals, snacks, housekeeping, laundry, and medication supervision. Transportation, chapel, and activities. Non-refundable move-in fee: \$500.
The Bridge 2444 Pratt Street Longmont, CO 80501 303-774-8255	Studio apt.: \$3,160. Studio deluxe: \$3,345. 1 BR: \$3,940. 1 BR deluxe: \$4,140. All meals, snacks, ice cream parlor, housekeeping, laundry, activities, fitness center. Van service Monday through Friday. Application fee: \$1,000. Doctor in on Tuesday or Thursday.
Bross Street 537 Bross Street Longmont, CO 80501 303-682-5095	Studio Deluxe: \$3,000 - \$3,500. Security deposit: ½ of first month's rent. All meals, snacks, housekeeping, laundry, medicine administration and cable TV (excludes phone). All private rooms.
Cinnamon Park 1335 Cinamon St., A & B Longmont, CO 80501 303-772-2882	Single private: \$2,800. Semi-private (couple): \$5,200. Semi-private (single): \$2,600. All meals, housekeeping, laundry, medication management.
Millbrook Homes VI & VII 1746 Cove Court Longmont, CO 80501 303-220-7989	Private room: \$4,000. All meals, housekeeping. One home dedicated to care for patients with Alzheimer's/dementia/early memory care. Secure residence.
Safe Harbor 1424 16th Ave Longmont, CO 80501 303-776-4384	Private and Semi-Private: \$3,200 - \$4,000 \$250 security deposit. 24 hour care, meals, housekeeping, laundry, activities and foot care.

2011 Housing Prices

<p>Sterling House 2240 Pratt Street Longmont, CO 80501 303-682-1066</p>	<p>Studio: \$3,750. 1 BR: 3,550. 1 BR deluxe: \$2,980. One time move-in fee: \$1,000. Respite: \$125/ day includes everything. Includes all meals, housekeeping, laundry, activities, and transportation.</p>
<p>The Peaks Care Center 1440 Coffman Street Longmont, CO 80501 303-776-2814</p>	<p>Suite: \$2,800. Room: \$2,600. All meals housekeeping, laundry, medication assistance, activities and therapies included.</p>
<p>Timberline Lodge 9198 Jotipa Drive Longmont, CO 80501 303-776-7215</p>	<p>1 BR: \$2,550 - \$3,750. All meals, housekeeping, laundry, activities, snacks, medication monitoring, outings levels of care, and extra care. \$350 move-in fee.</p>
<p>The Vistas in Longmont 2310 9th Ave. Longmont, CO 80501 303-678-5050</p>	<p>Call for pricing information. 1BR, 2BR, all meals, snacks, laundry, medication supervision, personal care.</p>

2011 Housing Prices

SKILLED NURSING FACILITIES	DAILY ROOM RATES
Applewood Living Center 1800 Stroh Place Longmont, CO 80501 303-776-6081	Nursing care semi-private: \$225. Private room: \$315, includes everything except prescription medicines. All meals, housekeeping, laundry, cable TV, (excludes phone), activities, transportation, hospice, short-term rehabilitation, 24-hr nursing services, respite and long-term care, dental screening, medical equipment
Life Care Center 2451 Pratt Street Longmont, CO 80501 303-776-5000	Semi-private: \$226/day. Private: \$243. Alzheimer's (private): \$248. Alzheimer's (semi-private): \$231/day. Rehabilitation: \$541/day. Daily rates include 24-hr nursing care, short-term rehabilitation, hospice, dementia care, personal supplies, telephone, meals, housekeeping, laundry, chaplin, satellite TV, activities, transportation.
The Peaks Care Center 1440 Coffman Street Longmont, CO 80501 303-776-2814	Semi-private: \$220/day. Private: \$303/day. Private suite: \$318/day. All meals, housekeeping, laundry, activities, transportation, cable, therapy, wound care and Alzheimer's unit (secure).

Updated Summer 2011, Boulder County Aging Services.
 Prices are subject to change without notice.

Lyons, Nederland and Niwot

LYONS

RATES

Bloomfield Place 722 5 th Avenue Lyons, CO 80540 720-564-2281	30% of adjusted gross income plus electricity play income restricted. No Section 8 accepted, security deposit varies. One pet less than 30 lbs allowed with \$200 deposit. Waitlist only, waitlist closed.
Walt Self Senior Housing 335 Railroad Avenue Lyons, CO 80540 720-564-2284	30% of adjusted gross income. \$200 security deposit plus electricity. One pet less than 30 lbs allowed with \$200 deposit. No Section 8 accepted, income restricted. Waitlist only, waitlist open.

NEDERLAND

RATES

Prime Haven 107 E. 2 nd Avenue Nederland, CO 80466 720-564-2284	30% of adjusted gross income, all utilities included, \$200 security deposit. One pet less than 30 lbs allowed with \$200 deposit. No Section 8 accepted, income restricted. Waitlist only, waitlist open.
---	--

NIWOT

RATES

Eagle Place 6790 N. 79 th Street Niwot, CO 80544 720-564-2284	Project based vouchers, no Section 8 accepted. 30% of adjusted gross income plus gas and electricity. Waitlist only, waitlist closed.
---	---

Updated Summer 2011, Boulder County Aging Services.
Prices are subject to change without notice.

Boulder County Resource Specialists

Boulder County Aging Services*

Keith Carr -

Aging Resource Consultant

Allenspark Area Phone: **303-747-2592**

Lyons Area Phone: **303-823-9016**

Email: kcarr@bouldercounty.org

Karen Hoover -

Aging Resource Consultant

Nederland Area Phone: **303-258-3068**

Email: khoover@bouldercounty.org

Rebekah Van Sweden -

Aging Resource Consultant

Niwot Area Phone: **303-652-3850**

Email: rvansweden@bouldercounty.org

Center for People with Disabilities*

Marni Tharler -

Information & Assistance Specialist

Phone: **303-442-8662 ext. 102**

Email: info@cpwd.org

City of Boulder Senior Services*

Sandy Hollingsworth -

Senior Resources Program Manager

Phone: **303-441-4388**

Email: hollingsworths@bouldercolorado.gov

Jodi Ansell -

Senior Resources Specialist

Phone: **303-441-4388**

Email: ansellj@bouldercolorado.gov

Jacki Myers -

Senior Resources Specialist

Phone: **303-441-4388**

Email: myersj@bouldercolorado.gov

Kelly Reynolds -

Senior Resources Specialist

Phone: **303-441-4388**

Email: reynoldsk@bouldercolorado.gov

Daniel Escribens -

Bilingual Senior Resources Assistant

Phone: **303-441-3918**

Email: escribensd@bouldercolorado.gov

City of Lafayette Senior Services*

Lorna Beard -

Resource Specialist

Phone: **303-665-9052 ext. 3**

En español: **303-665-9052 ext. 4**

Email: lornab@cityoflafayette.com

City of Longmont Senior Services*

Veronica Garcia -

Seniors Resource Specialist, bilingual

Phone: **303-651-8716**

Email: veronica.garcia@ci.longmont.co.us

Imagine!*

Phone: **303-665-7789**

Louisville Senior Services

Diane Evans -

Community Resource Coordinator

Phone: **303-335-4919**

Email: dianee@louisvilleco.gov

*A CONNECT! Partner

[illegible]

This image shows a single sheet of white paper with horizontal ruling lines. The lines are evenly spaced and run across the width of the page. There are no margins, text, or other markings on the paper.

[illegible]

If you have found that this directory has been helpful and beneficial, and you would like to see it continued and updated, please consider making a donation to Aging Services Foundation of Boulder County. Please note on the donation “SENIOR HOUSING GUIDE”.

**For more information about making a donation please call
Boulder County Aging Services Division at 303-441-3570.**



FALL 2011